

BLACKSTONE

WOOD BURNING FIREPLACES



The Blackstone fireplace has a large front opening to highlight the stacked brick interior and offers a full view of the fire on those cold winter nights.

STANDARD FEATURES

- ◆ Available in 36" and 42" models
- ◆ Radiant smooth-faced or circulating rolled louver models
- ◆ Fully insulated firebox for increased performance in colder climates
- ◆ Stacked refractory panels
- ◆ Log grate
- ◆ Includes mesh fire screens
- ◆ Optional glass doors available in black trim for improved safety
- ◆ Optional gas log sets deliver the charm of a wood fire with the convenience of gas
- ◆ Includes adjustable outside air damper
- ◆ Fan kit available (for circulating models only)
- ◆ Durable textured powder coat finish
- ◆ Uses IHP 8DM or 8HT (required for Canada) chimney system
- ◆ 20 year limited warranty

INTERIOR (Required)



Stacked



Chestnut Hill



Chestnut Hill HD



Blonde Oak



Bison Mountain



Rich Oak

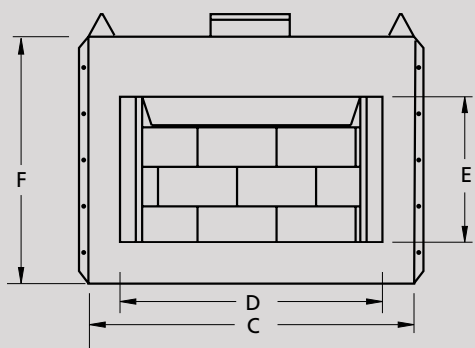
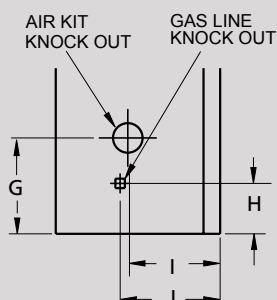
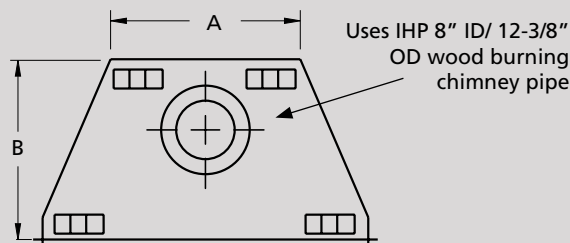


Western Timber

Options

GAS LOG SETS

APPLIANCE SPECIFICATIONS



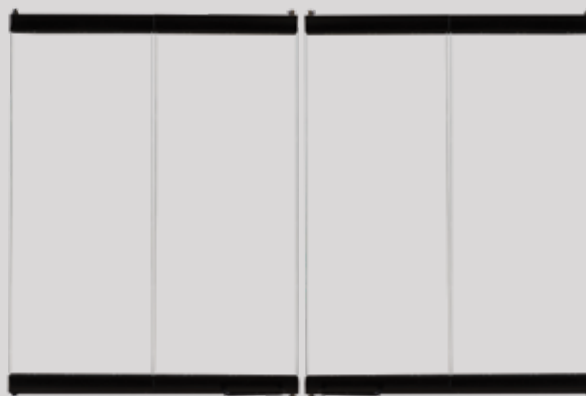
| | BLACKSTONE 36 | BLACKSTONE 42 |
|---|---------------|---------------|
| A | 22-1/2" | 28-1/2" |
| B | 21-1/8" | 21-1/8" |
| C | 38" | 44" |
| D | 36" | 42" |
| E | 21-1/2" | 21-1/2" |
| F | 34" | 33" |
| G | 13-7/8" | 10-3/8" |
| H | 9-1/8" | 8-1/4" |
| I | 9-5/8" | 7" |
| J | 10-1/4" | 13" |

FRAMING SPECIFICATIONS

| | BLACKSTONE 36 | BLACKSTONE 42 |
|--------|---------------|---------------|
| WIDTH | 38-1/4" | 44-1/4" |
| HEIGHT | 38-5/8" | 37-5/8" |
| DEPTH | 22" | 22" |

ADDITIONAL ACCESSORIES

- ❖ BI-FOLD GLASS DOORS
- ❖ OUTSIDE AIR KIT
- ❖ GAS LOGS
- ❖ FAN KIT (LOUVERED MODELS ONLY)



Bi-fold tempered glass doors are expertly crafted.

INTERIOR FIREBOX DIMENSIONS*

| | BLACKSTONE 36 | BLACKSTONE 42 |
|-------------|---------------|---------------|
| FRONT WIDTH | 34-3/4" | 38-7/8" |
| REAR WIDTH | 19-3/8" | 25-3/8" |
| DEPTH | 14-1/2" | 14-1/2" |
| HEIGHT | 21-1/2" | 21-1/2" |

* To assist with compatible log size selection

IMPORTANT NOTES:

As with any fireplace, this appliance is extremely hot during operation. Read and understand all operating instructions before using this appliance. For further information, consult your dealer.

Local conditions, such as elevation, wind, vent configuration and choice of fuel will affect overall appearance of the fire and heating performance. Performance can also vary with home design and insulation, climate, condition and type of fuel used, appliance location, burn rate, accessories chosen, chimney installation and how the appliance is operated.

Diagrams, illustrations and photographs are not to scale—consult installation instructions. Product designs, materials, dimensions, specifications, colors and prices are subject to change or discontinuance without notice.

astria
FIREPLACES®

© 2025 Innovative Hearth Products
785734M 07/25

Visit us online
Astria.us.com

PFS
C US
Report #F09-171

