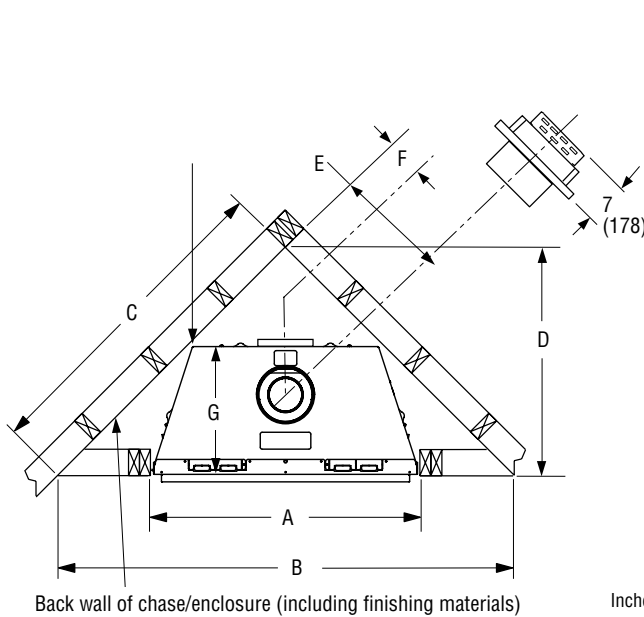


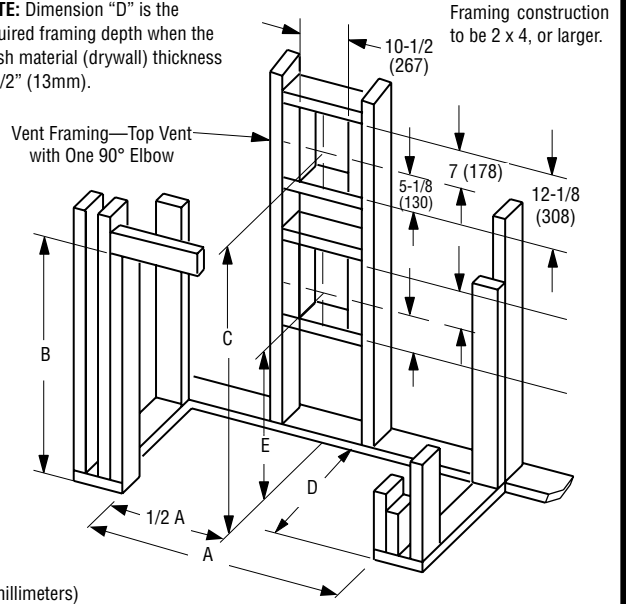
# ARIES™ SERIES

## DIRECT-VENT FIREPLACES

Framing Dimensions



**NOTE:** Dimension "D" is the required framing depth when the finish material (drywall) thickness is 1/2" (13mm).



C = Minimum height of top vent installations  
E = Minimum height of rear vent installations

Model	A	B	C	D	E	F	G
33 Models	33-3/4 (857)	51-1/4 (1302)	36-1/4 (921)	25-5/8 (651)	12-1/8 (308)	5-1/2 (140)	14-1/2 (368)
35 Models	35-3/8 (899)	59-1/2 (1511)	42-1/8 (1070)	30-1/4 (768)	14-1/4 (362)	6-5/8 (168)	18 (457)
40 Models	40-3/8 (126)	63-7/8 (1622)	45-3/8 (1153)	33-1/4 (845)	15-7/8 (403)	8-1/2 (216)	18 (457)
45 Models	45-3/8 (1153)	70-3/8 (1788)	49-3/4 (1264)	35-1/4 (895)	17-1/2 (445)	10-1/4 (260)	18 (457)

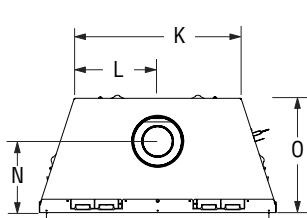
Model	A*	B	C	D	E
33 Models	33-3/4 (857)	34-1/4 (870)	36-7/8 (930)	14-1/2 (368)	19-5/8 (499)
35 Models	35-3/8 (899)	36-1/4 (921)	38-3/4 (984)	18 (447)	23-3/8 (594)
40 Models	40-3/8 (1026)	41-1/4 (1048)	43-3/4 (1111)	18 (447)	28-1/4 (717)
45 Models	45-3/8 (1153)	41-1/4 (1048)	43-3/4 (1111)	18 (447)	28-1/4 (717)

\*Minimum opening size; additional 1/8" per side is recommended.

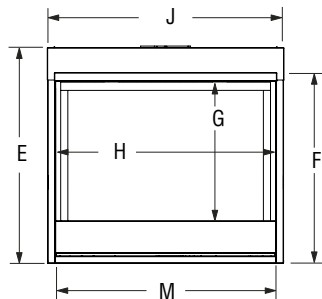
**NOTE:** Framing specifications do NOT apply for flexible venting. When using flexible venting, refer to the kit requirements for framing specifications.

Fireplace Dimensions

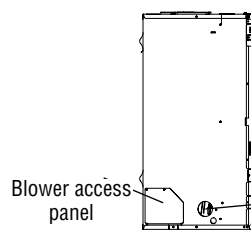
**NOTE:** When finishing the area around the hood, 5/8" clearance above hood is required for hood installation.



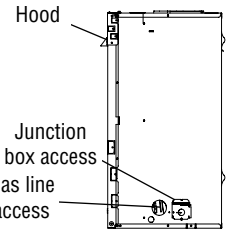
Top View



Front View



Left Side View



Right Side View

Model	E	F	G	H (door)	J	K	L	M	N	O
33" Models	30-1/8 (765)	26-1/4 (667)	18-3/8 (467)	30-1/2 (775)	33-5/8 (854)	21-7/8 (556)	11 (279)	31 (787)	8-1/2 (216)	14 (356)
35" Models	32-1/8 (816)	28-3/4 (730)	22-1/4 (565)	32-3/8 (822)	35-1/4 (895)	25 (635)	12-1/2 (317)	32-7/8 (835)	10-1/8 (257)	17 (432)
40" Models	37-1/8 (943)	33-1/4 (845)	27-1/4 (692)	37-3/8 (949)	40-1/4 (1022)	30 (762)	15 (381)	37-7/8 (962)	10-1/8 (257)	17 (432)
45" Models	37-1/8 (943)	33-1/4 (875)	27-1/4 (692)	42-3/8 (1076)	45-1/4 (1149)	35 (889)	17-1/2 (445)	42-7/8 (1089)	10-1/8 (257)	17 (432)

Inches (millimeters)

**NOTE:** DIAGRAMS & ILLUSTRATIONS ARE NOT TO SCALE.

# ARIES™ SERIES

## Product Information

Cat. No.	Model	Weight	Cu. Ft.
F1675	Aries33TMN	88 lb.	11.0
F1676	Aries33TMP	88 lb.	11.0
F1677	Aries33TEN	88 lb.	11.0
F1735	Aries33TEP	88 lb.	11.0
F1681	Aries33RMN	88 lb.	11.0
F1682	Aries33RMP	88 lb.	11.0
F1683	Aries33REN	88 lb.	11.0
F1737	Aries33REP	88 lb.	11.0

Cat. No.	Model	Weight	Cu. Ft.
F1672	AriesCD33TMN	96 lb.	11.0
F1673	AriesCD33TMP	96 lb.	11.0
F1674	AriesCD33TEN	96 lb.	11.0
F1734	AriesCD33TEP	96 lb.	11.0
F1678	AriesCD33RMN	96 lb.	11.0
F1679	AriesCD33RMP	96 lb.	11.0
F1680	AriesCD33REN	96 lb.	11.0
F1736	AriesCD33REP	96 lb.	11.0

Cat. No.	Model	Weight	Cu. Ft.
F1687	Aries35TMN	102 lb.	10.4
F1688	Aries35TMP	102 lb.	10.4
F1689	Aries35TEN	102 lb.	10.4
F1739	Aries35TEP	102 lb.	10.4
F1693	Aries35RMN	102 lb.	10.4
F1694	Aries35RMP	102 lb.	10.4
F1695	Aries35REN	102 lb.	10.4
F1741	Aries35REP	102 lb.	10.4

Cat. No.	Model	Weight	Cu. Ft.
F1684	AriesCD35TMN	99 lb.	10.4
F1685	AriesCD35TMP	99 lb.	10.4
F1686	AriesCD35TEN	99 lb.	10.4
F1738	AriesCD35TEP	99 lb.	10.4
F1690	AriesCD35RMN	99 lb.	10.4
F1691	AriesCD35RMP	99 lb.	10.4
F1692	AriesCD35REN	99 lb.	10.4
F1740	AriesCD35REP	99 lb.	10.4

Cat. No.	Model	Weight	Cu. Ft.
F1699	Aries40TMN	128 lb.	13.7
F1700	Aries40TMP	128 lb.	13.7
F1701	Aries40TEN	128 lb.	13.7
F1743	Aries40TEP	128 lb.	13.7
F1705	Aries40RMN	128 lb.	13.7
F1706	Aries40RMP	128 lb.	13.7
F1707	Aries40REN	128 lb.	13.7
F1745	Aries40REP	128 lb.	13.7

Cat. No.	Model	Weight	Cu. Ft.
F1696	AriesCD40TMN	121 lb.	12.7
F1697	AriesCD40TMP	121 lb.	12.7
F1698	AriesCD40TEN	121 lb.	12.7
F1742	AriesCD40TEP	121 lb.	12.7
F1702	AriesCD40RMN	121 lb.	12.7
F1703	AriesCD40RMP	121 lb.	12.7
F1704	AriesCD40REN	121 lb.	12.7
F1744	AriesCD40REP	121 lb.	12.7

Cat. No.	Model	Weight	Cu. Ft.
F1711	Aries45DMN	120 lb.	15.4
F1712	Aries45DMP	120 lb.	15.4
F1713	Aries45DEN	120 lb.	15.4
F1747	Aries45DEP	120 lb.	15.4

Cat. No.	Model	Weight	Cu. Ft.
F1708	AriesCD45DMN	128 lb.	16.5
F1709	AriesCD45DMP	128 lb.	16.5
F1710	AriesCD45DEN	128 lb.	16.5
F1746	AriesCD45DEP	128 lb.	16.5

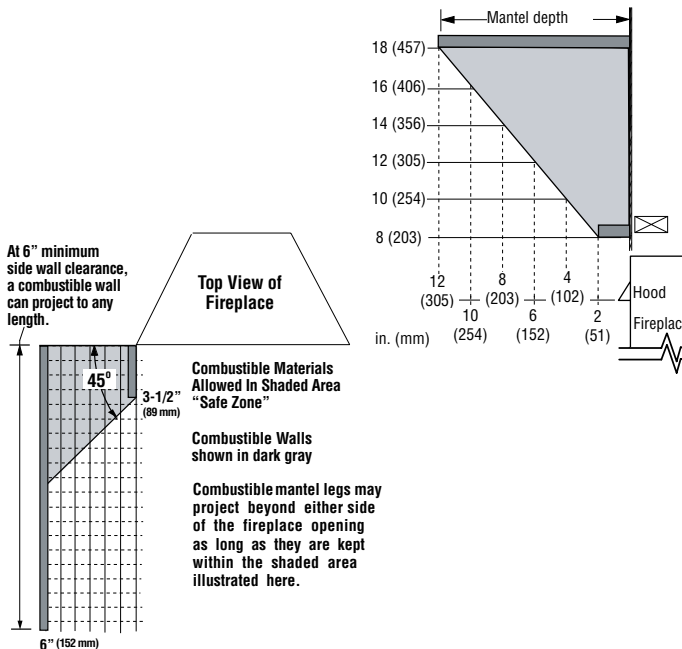
Listing



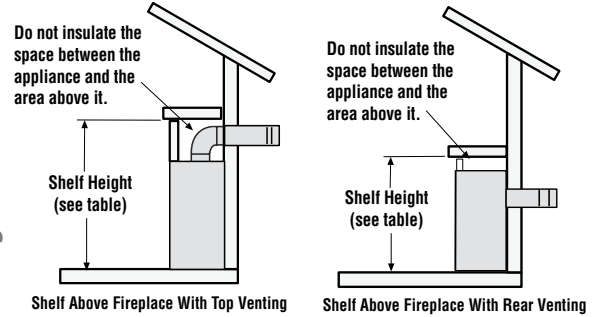
Report No. F13-094

Listed by PFS Corporation to - ANSI Z21.88 (in Canada, CSA-2.33), and CAN/CGA-2.17-M91 in both USA and Canada, as a vented gas fireplace heater.

## Clearances



## Shelf Height



## Venting

