

IRONSTRIKE WOOD INSERTS  
**PERFORMER C210**  
 COUNTRY STOVES COLLECTION

COUNTRY STOVES  
 A LIFETIME OF WARMTH



**PERFORMER C210**

**OVERVIEW**

- ◆ Integrated air wash system helps keep the glass clean during use for an improved view of the fire.

---

- ◆ Ceramic glass for extra strength and optimum heat transfer.

---

- ◆ Unique, integral air wash system keeps the glass clean and clear for a wide-open view of the fire.

---

- ◆ Precision-cut, heavy-gauge steel provides dependable, long-lasting operation.

---

- ◆ High-density firebrick retains heat longer, resulting in increased efficiency.

---

- ◆ One-touch control ensures easy operation and comfort.

---

- ◆ Optional decorative door faceplates in Brushed Nickel or Nickel allow customization to your style.

---

- ◆ Choice of surround panels to cover the surrounding fireplace opening (1-required).

---

- ◆ Optional 160-CFM variable-speed blower quickly moves heat from the insert into your room.

---

- ◆ EPA-certified and Washington State-approved for clean and efficient operation.


---

- ◆ **Limited Lifetime Warranty**


**OPTIONS**

**FACE STYLE & FINISH**

Traditional door Arch door



- Brushed Nickel
- Nickel-Plated
- Standard Black



**SURROUND & TRIM**

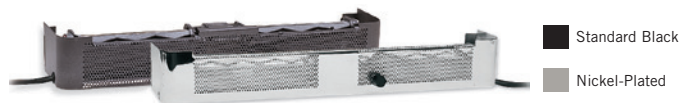
Choose from several sizes of surround panels and an optional black surround trim kit for a finished appearance.



Black

**BLOWER**

All Country Stoves Collection fireplace inserts may be fitted with an optional variable-speed blower (160-CFM blower).



\* Square-foot heating capacities and burn times are approximations only. Actual performance may vary depending upon home design and insulation, ceiling heights, climate, condition and type of wood used, appliance location, burn rate, accessories chosen, chimney installation and how the appliance is operated.

# SPECIFICATIONS

## PRODUCT DIMENSIONS

	PERFORMER C210
Front Width	25"
Rear Width (Rear Taper Width)	25-1/2" (23")*
A = Front Height	18"
B = Rear Height	19"
C = Depth into FP	12-1/4"
Flue Diameter **	6"
D = Depth onto Hearth	9"
Approximate Weight	463 lbs.

\*\* Consult your dealer or professional installer for recommended chimney sizes for your application. C260 and C310 require 6" reducer for use with 6" chimney.

\* Leveling nuts extend outside this dimension.

## SURROUND SIZING

	PERFORMER C210
Surround Size	26-1/2"H x 40"W
	26-1/2"H x 48"W
	30-1/2"H x 40"W
	30-1/2"H x 48"W
Able to be Trimmed	N/A

## CLEARANCES

		PERFORMER C210
E = Insert Top to Combustible Mantel	US	24"
	Canada	32"
F = Insert Top to Top Facing	US	18"
	Canada	26"
G = Insert Side to Side Wall		18"
H = Insert Side to Side Facing		15"
I = Hearth in Front of Insert †		18"
J = Minimum Mantel Height from Bottom of Insert		42-1/8"
K = Hearth to Side of Insert		8"(US/CN)

† In some cases the hearth depth in front of inset may be reduced by 2" for every 2" the hearth is raised. Check the owners manual for details.

## FIREPLACE SIZING

		PERFORMER C210	
		MASONRY FIREPLACE	ZC FIREPLACE
L	Minimum Depth	12-1/2"	12-1/2"
M	Minimum Height	19-1/4"	21"
N	Minimum Width	26"	36"
P	Minimum Rear Width	25"	25"
Q	Maximum Lintel Depth	4-1/2"	4-1/2"

## DIAGRAMS

