

MADISON PARK CD



SHOWN: MADISON PARK CD 34

OVERVIEW

- ◆ Available in large, medium and small models to fit a wide range of fireplace sizes.

- ◆ Electronic ignition system with battery backup—still ignites and heats during a power outage.

- ◆ Outstanding heating efficiency for increased comfort and lower operating costs.

- ◆ Ceramic glass for optimum heat transfer and a protective screen*.

- ◆ State-of-the-art burn technology and glass floor media provide a stunning flame presentation.

- ◆ Choose between several distinctive styles of accessory façades to match the look of your existing décor (required).

- ◆ Interior selections consist of black reflective porcelain or a variety of ceramic fiber liners (required).

- ◆ Reflective black crushed glass media included with several optional colors available to customize the look

- ◆ Mood enhancing interior illumination with six distinctive settings (large & medium models).

- ◆ Factory installed blower with six speed settings to fine tune your heating needs.

- ◆ Full-function remote control included (IPI/CPI, thermostat, flame height, blower, lighting).

- ◆ 20 year limited warranty.

*All applicable models comply with ANSI Z21.50/88 barrier requirements.

OPTIONS

FACADES



Full Face Façade



Contemporary



Decco

ACCENT TRIMS



Frontier



Highliner



Iron Rail

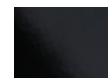
LINERS



Black Tie



Heritage Brown

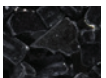


Porcelain



Flat Black

GLASS MEDIA



Reflective Black (Std)



Platinum



Refl. Blue

SPECIFICATIONS

PRODUCT DIMENSIONS

		Madison Park CD 27	Madison Park CD 32	Madison Park CD 34
Width	Front	26-5/8"	31-5/8"	33-5/8"
	Back/Rear	16-3/4"	21"	23"
Height	Overall	17-7/8"	19-3/8"	23-7/8"
	Depth	14-7/8"	15-7/8"	16-1/4"
To Centerline (CL) of 3" Flue Collar		8-3/16"	9-3/4"	10"

CLEARANCES

MINIMUM CLEARANCES TO COMBUSTIBLES

		Madison Park CD 27	Madison Park CD 32	Madison Park CD 34
A	1-1/2" Top facing to bottom of appliance	32"	32"	36"
B	Side facing or side wall to center of glass	23"	25-7/8"	26-7/8"
C	6" Mantel to bottom of appliance	34"	32"	36"
D	Vertical distance from base of appliance to hearth extension	0" 4"	0" 10"	0" 10"
E	Minimum horizontal distance from front of appliance	10" 0"	2" 0"	2" 0"

Hearth protection to be minimum of 3/8" thick non-combustible or equivalent, with a k factor of .84.

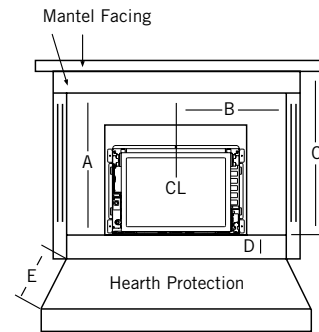
SURROUND SIZING

	Madison Park CD 27	Madison Park CD 32	Madison Park CD 34
Standard Surround 3-pc	26" H X 37" W	26" H X 41" W	31" H X 41" W
	26" H X 41" W	26" H X 46" W	31" H X 46" W
	30" H X 37" W	33" H X 41" W	34" H X 41" W
	30" H X 41" W	33" H X 46" W	34" H X 46" W
Standard Surround 1-pc	N/A	N/A	N/A
4 Sided - Able to be Trimmed	38" H X 46" W	38" H X 46" W	42" H X 46" W
Cast Surround	N/A	N/A	N/A

FIREPLACE SIZING

	Madison Park CD 27	Madison Park CD 32	Madison Park CD 34
Front Width	27"	32"	34"
Height	18"	19-1/2"	24"
Rear Width	17"	22"	24"
Depth	15"	16"	16"

DIAGRAMS



MADISON PARK CD 27

BTU INPUT NG: 21,000 - 30,000

BTU INPUT LP: 20,000 - 25,000

HEATING CAPACITY: 500 – 1,500 square feet

AFUE EFFICIENCY: 67% (NG) 69% (LP)

ENERGUIDE (P4) EFFICIENCY: 66% (NG) 68% (LP)

BLOWER: 150-CFM

REMOTE CONTROL: Standard

MADISON PARK CD 32

BTU INPUT NG: 23,000 - 34,000

BTU INPUT LP: 28,000 - 34,000

HEATING CAPACITY: 500 – 1,750 square feet

AFUE EFFICIENCY: 72% (NG) 74% (LP)

ENERGUIDE (P4) EFFICIENCY: 67% (NG) 72% (LP)

BLOWER: 150-CFM

REMOTE CONTROL: Standard

MADISON PARK CD 34

BTU INPUT NG: 25,000 - 38,000

BTU INPUT LP: 27,000 - 35,500

HEATING CAPACITY: 500 – 2000 square feet

AFUE EFFICIENCY: 68% (NG) 70% (LP)

ENERGUIDE (P4) EFFICIENCY: 66% (NG) 70% (LP)

BLOWER: 150-CFM

REMOTE CONTROL: Standard



Visit us online
IronStrike.us.com

