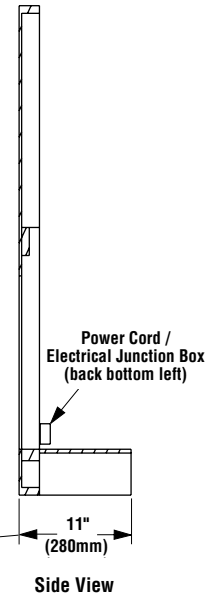
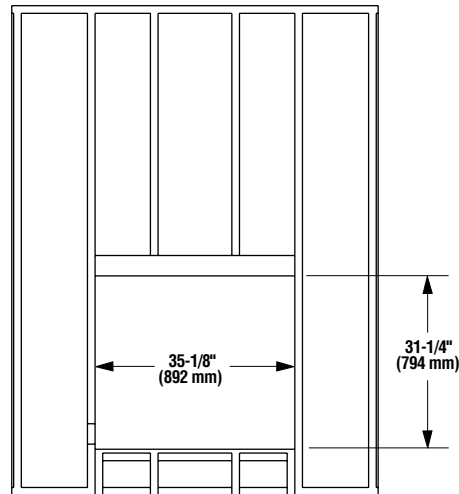
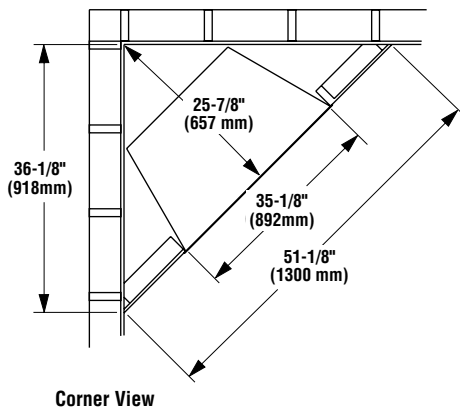


IHP 36" Electric Fireplace

Framing Dimensions



Framing depth 11" including 1/2" facing material

11" (280mm)

Product Reference Information

Model: IHPET2036

Electric Fireplace, 36" Radiant

Shipping Weight: 75 lb.'s (34 kg)

Packaging:

39.8" W X 14.57" D X 34.65" H
(1011 mm x 370 mm x 880 mm)
11.63 cu. ft.

Power Requirements:

(120 Volt, 60 Hz.)

Rated Wattage - 1500 Watts

Amperage - 13.33 Amps

(240 Volt, 60 Hz.)

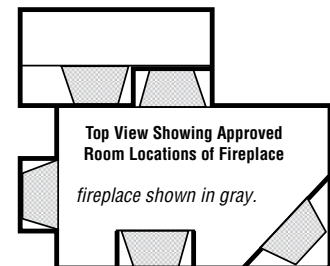
Rated Wattage - 3000 Watts

Amperage - 12.5 Amps

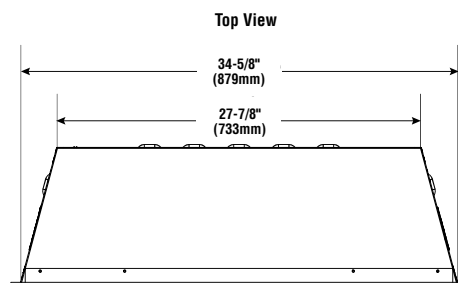
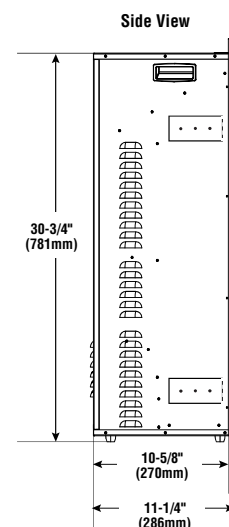
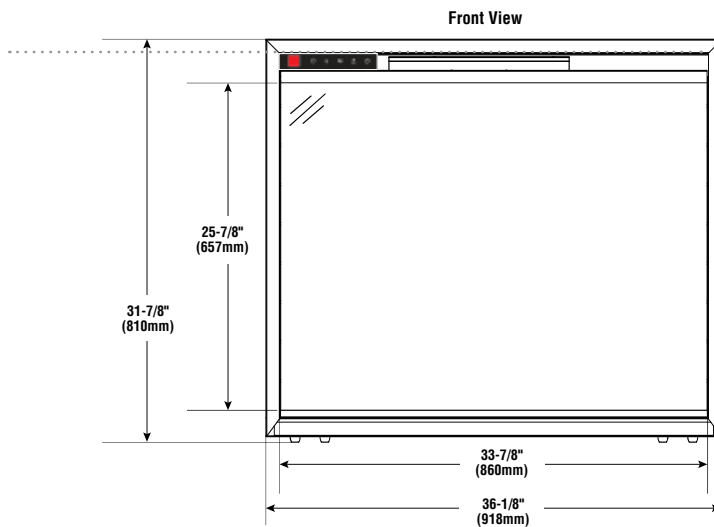
(120V) 5,000 BTU/HR

(240V) 10,000 BTU/HR

Locations



Fireplace Dimensions



Listing



This appliance has been tested in accordance with UL 2021 and CSA C22.2 No. 46-13 standards.

IHP 36" Electric Fireplace

Product Info

Clearances to Combustibles

Fireplace Features & Optional Accessories

Product Reference Information			
Cat. #	Model	Weight	Cu. Ft.
F5114	IHPET2036	75 lbs. (34 kg)	17.3 cu. ft.

Clearances - This appliance is an electric fireplace designed to be framed in with combustible materials (up to the edge of the appliance). A drywall lip at the top of the fireplace is provided to facilitate installation.

Minimum Clearances	
Bottom	0 inches - 0 mm
Top (to mantel)	0 inches - 0 mm
Top (to ceiling)	0 inches - 0 mm
Sides	0 inches - 0 mm
Back	0 inches - 0 mm
Floor	0 inches - 0 mm

Mantel Clearance: Combustible and Non-combustible mantels may be installed at any height above the top of the face of fireplace.

Hearth Protection: A hearth is not required, but it is recommended for aesthetic purposes.

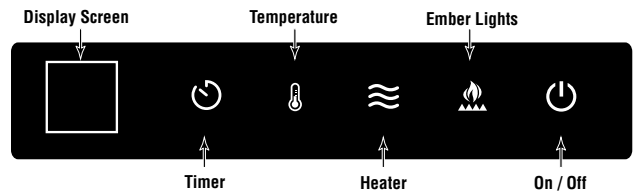
ELECTRIC FIREPLACE



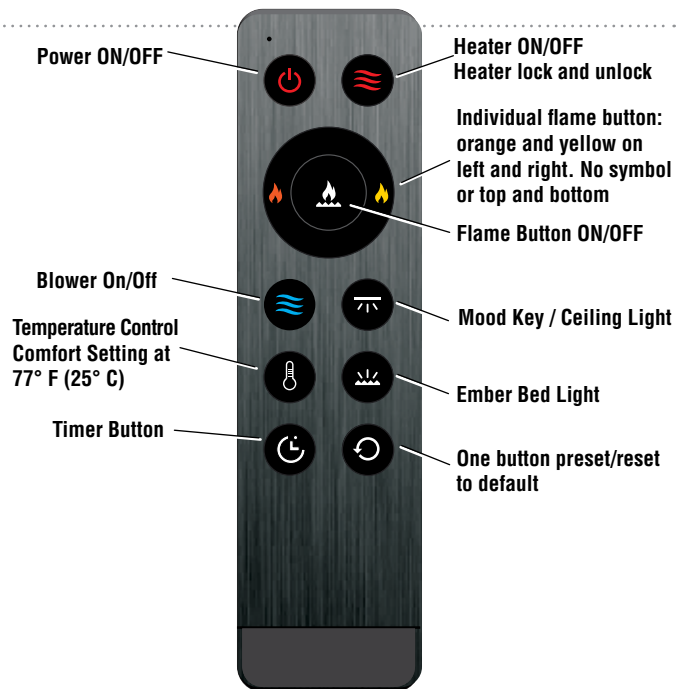
Controls - This appliance can be operated either from the manual control panel (see below) or by using the remote control.

The manual controls are located on the top left of the fireplace.

Manual Control Panel (located on upper left face of fireplace)



Remote Control Function (with LED display on firebox)



Standard Features

- Charred split oak log set and glowing ember bed
- Standard 5,000-BTU/120V (10,000-BTU/240V) thermostatically controlled heater
- Control panel with illuminated display
- Multi-functional remote control
- 120V Power Cord

Specifications and clearances are subject to change without notice. Refer to Installation Manual before installation of these appliances for updated dimensions and instructions.

Printed in U.S.A. © 2025 Innovative Hearth Products
P/N 901309-02 REV. A 06/2025

